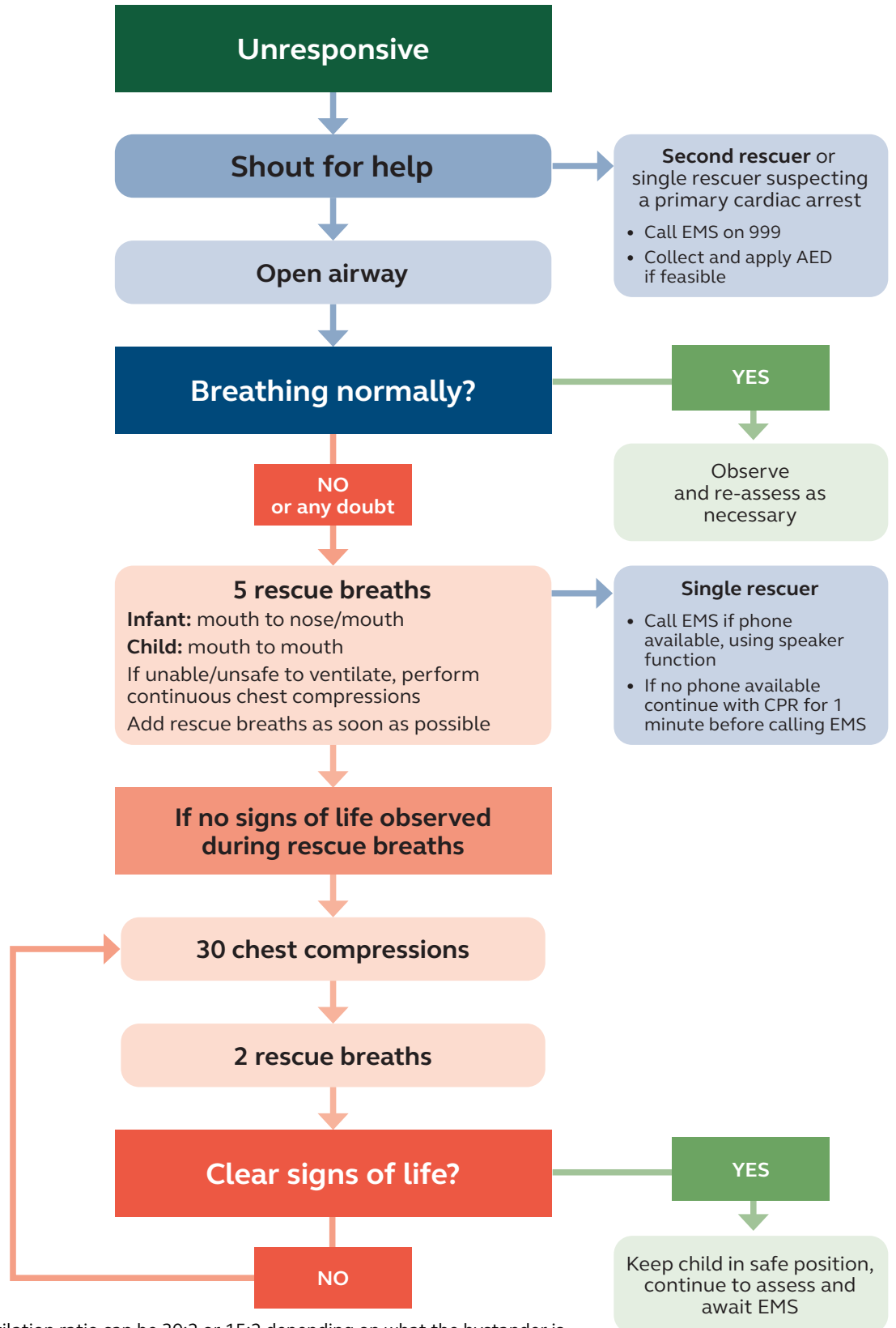




Paediatric out-of-hospital basic life support



* Chest compression : Ventilation ratio can be 30:2 or 15:2 depending on what the bystander is familiar with/or is directed to do by the emergency dispatcher.

Those trained only in 'adult' BLS (may include healthcare providers and lay rescuers) who have no specific knowledge of paediatric resuscitation, should use the adult sequence they are familiar with, including paediatric modifications. (January 2024)