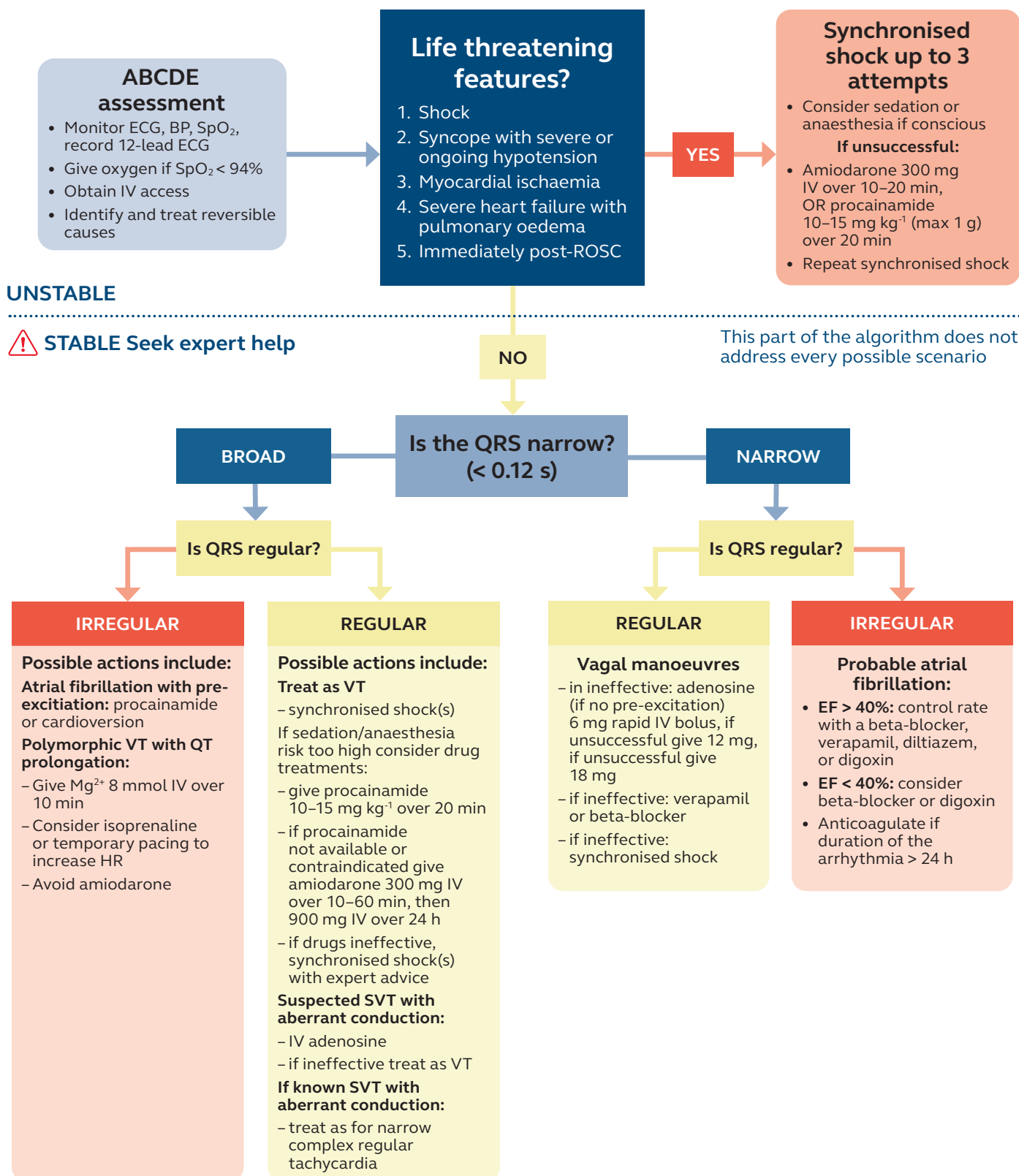


# Adult tachyarrhythmia



**⚠ This algorithm is for peri-arrest tachyarrhythmia of abnormal origin, it is not for sinus tachycardia** where the underlying cause should be treated; in sinus tachycardia do not try to normalise the heart rate with antiarrhythmic medication or synchronised cardioversion. Seek expert help if the tachyarrhythmia and/or life-threatening features persist.